



Andy Beshear  
GOVERNOR

## TRANSPORTATION CABINET

200 Mero Street  
Frankfort, Kentucky 40601

Jim Gray  
SECRETARY

September 10, 2025

CALL NO. 302  
CONTRACT ID NO. 252361  
ADDENDUM # 1

Subject: Casey County, FD05 023 2310 000-002  
Letting September 25, 2025

- (1) Revised - Special Provisions - Page 12 of 46
- (2) Revised - Location Map - Page 31 of 46
- (3) Revised - Summary Sheet - Page 33 of 46
- (4) Revised - Typical Section - Page 34 of 46
- (5) Revised - Bridge Detail Sheet - Page 35 of 46
- (6) Omit Proposal Page 32 of 46

Proposal revisions are available at <http://transportation.ky.gov/Construction-Procurement/>.

If you have any questions, please contact us at 502-564-3500.

Sincerely,

A handwritten signature in black ink that reads "Rachel Mills".

Rachel Mills, P.E.  
Director  
Division of Construction Procurement

RM:mr  
Enclosures

### **SURFACING AREAS**

The Department estimates the mainline surfacing width to be 16 feet.

The Department estimates the total mainline area to be surfaced to be 12,793 square yards.

The Department estimates the shoulder width to be 1 foot on each side.

The Department estimates the total shoulder area to be surfaced to be 1,454 square yards.

### **ASPHALT MIXTURE**

Unless otherwise noted, the Department estimates the rate of application for all asphalt mixtures to be 110 lbs/sy per inch of depth.

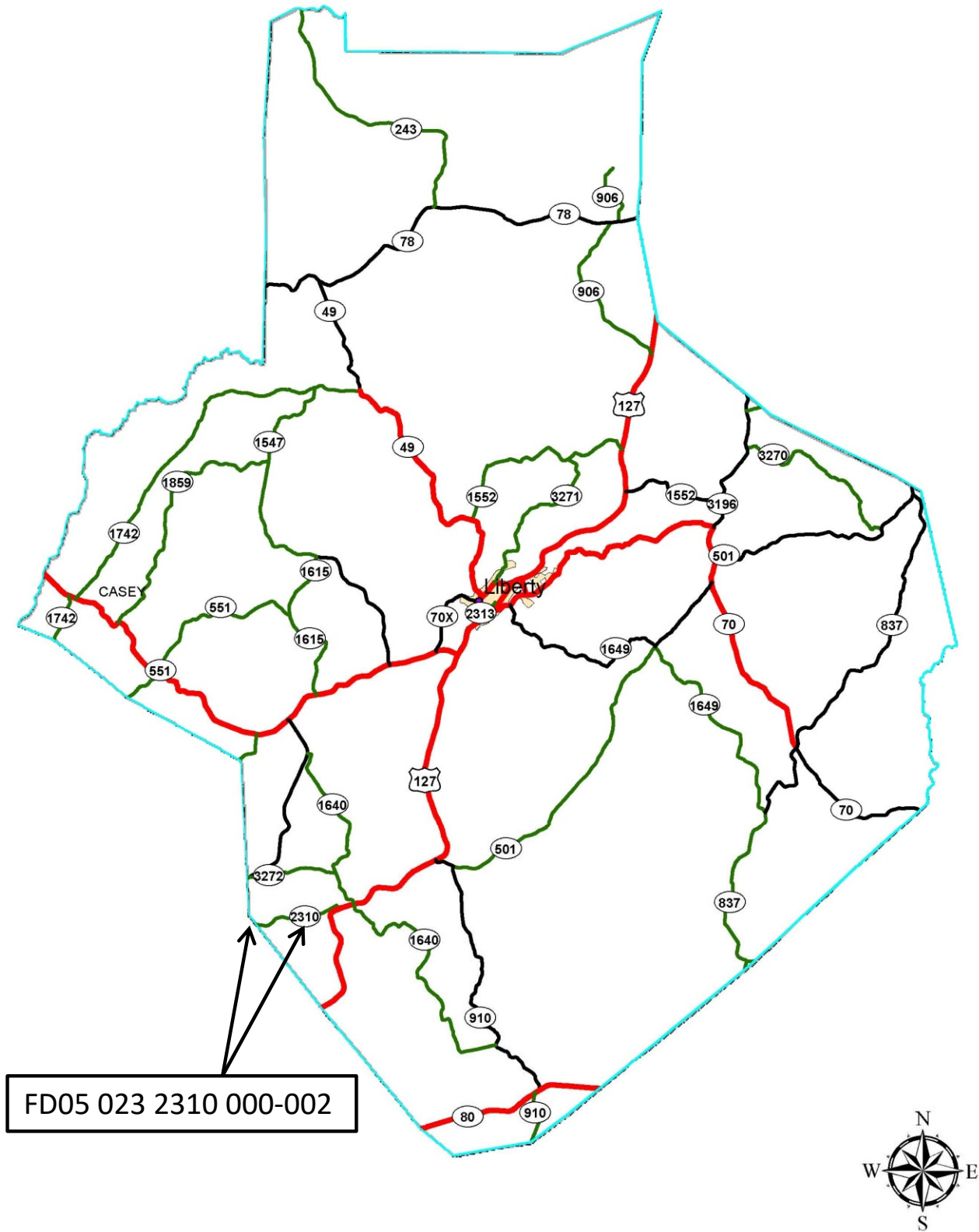
### **INCIDENTAL SURFACING**

The Department has included in the quantities of asphalt mixtures established in the proposal estimated quantities required for resurfacing or surfacing mailbox turnouts, farm field entrances, residential and commercial entrances, curve widening, ramp gores and tapers, and road and street approaches, as applicable. Pave these areas to the limits as shown on Standard Drawing RPM-110-06 or as directed by the Engineer. In the event signal detectors are present in the intersecting streets or roads, pave the crossroads to the right of way limit or back of the signal detector, whichever is the farthest back of the mainline. Surface or resurface these areas as directed by the Engineer. The Department will not measure placing and compacting for separate payment but shall be incidental to the Contract unit price for the asphalt mixtures.

### **OPTION B**

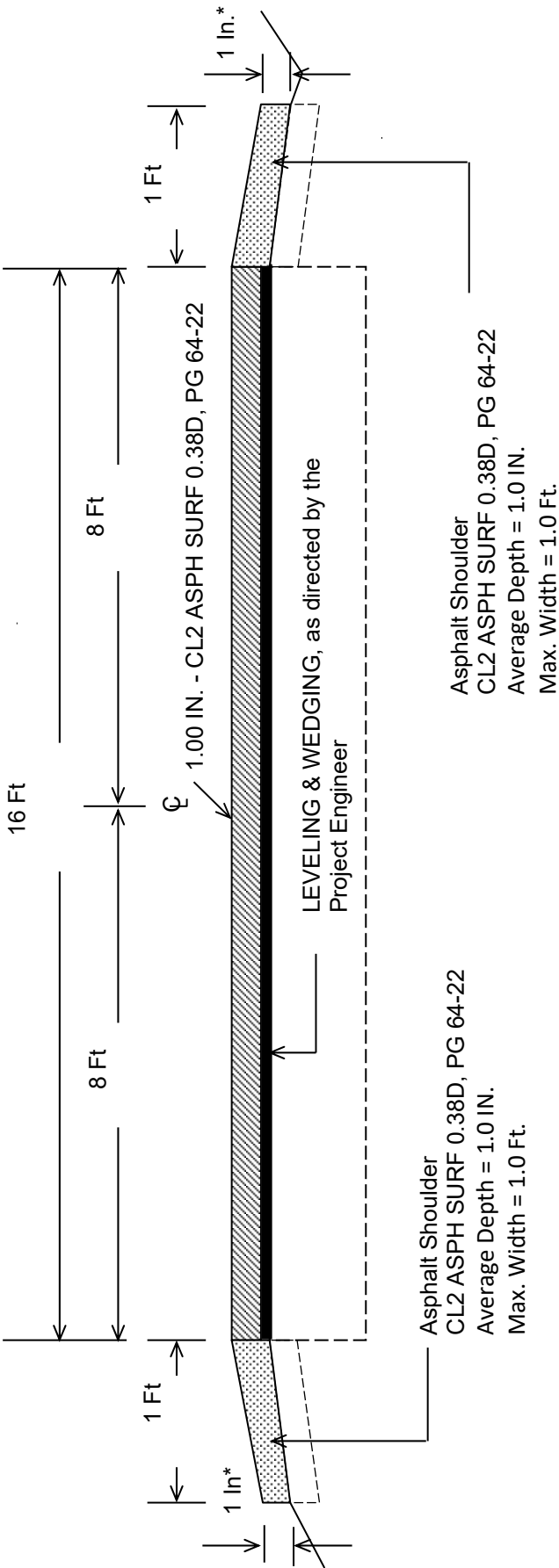
Be advised that the Department will control and accept compaction of asphalt mixtures furnished on this project under OPTION B in accordance with Sections 402 and 403.

# CASEY COUNTY LOCATON MAP



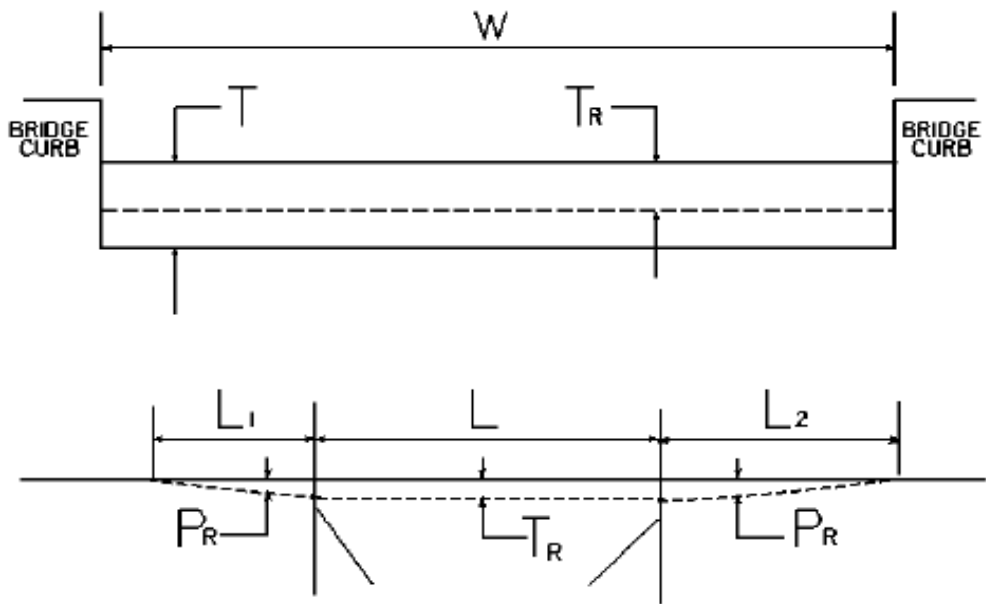
[illegible]

Casey County  
TYPICAL SECTION  
FD05 023 2310 000-002  
MP's 0.000 - 1.239



\*Where Existing Site Conditions Permit

BRIDGE DETAIL FOR PAVING PROJECT  
FD05 023 2310 000-002



W = bridge width curb to curb  
T = thickness of existing asphalt overlay  
L = length of bridge  
L<sub>1</sub> & L<sub>2</sub> = length of approach pavement to be removed  
T<sub>R</sub> = thickness to be removed and replaced on bridge  
P<sub>R</sub> = thickness to be removed and replaced on pavement  
Note: L<sub>1</sub> & L<sub>2</sub> lengths shall be determined by using a transition rate of 100 ft/in of thickness

Bridge No.	MP	W (ft)	T (in)	L <sub>1</sub> (ft)	L <sub>2</sub> (ft)	T <sub>R</sub> (in)	L (ft)	P <sub>R</sub> (in)
B00093N	0.184	18.00	0.00	100.00	100.00	0.00	69.00	1.00
B00073N	1.239	18.00	0.00	100.00	0.00	0.00	34.00	1.00